

THE STUDIO



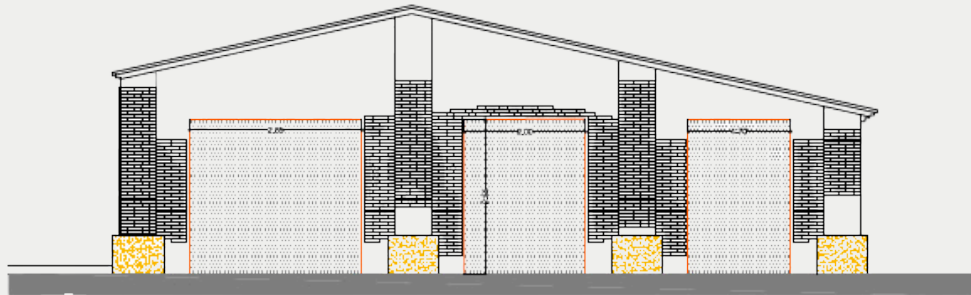
PERSPECTIVES



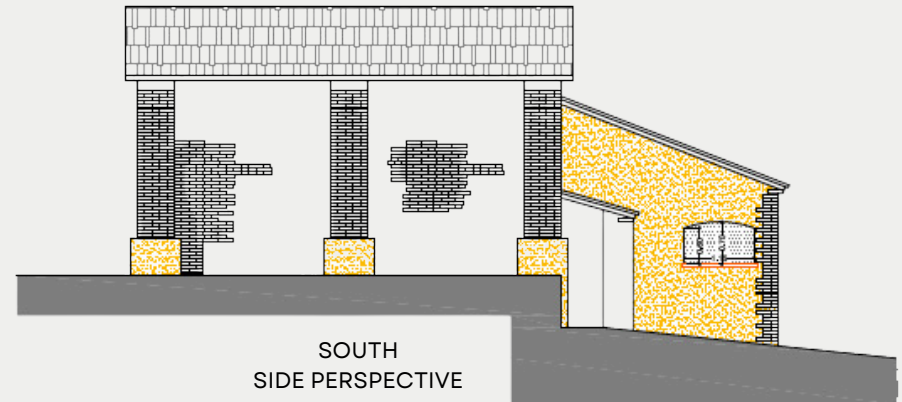
NORTH
ENTRANCE FROM LA CONCIMAIA



EAST
ENTRANCE FROM THE DRESSING ROOM



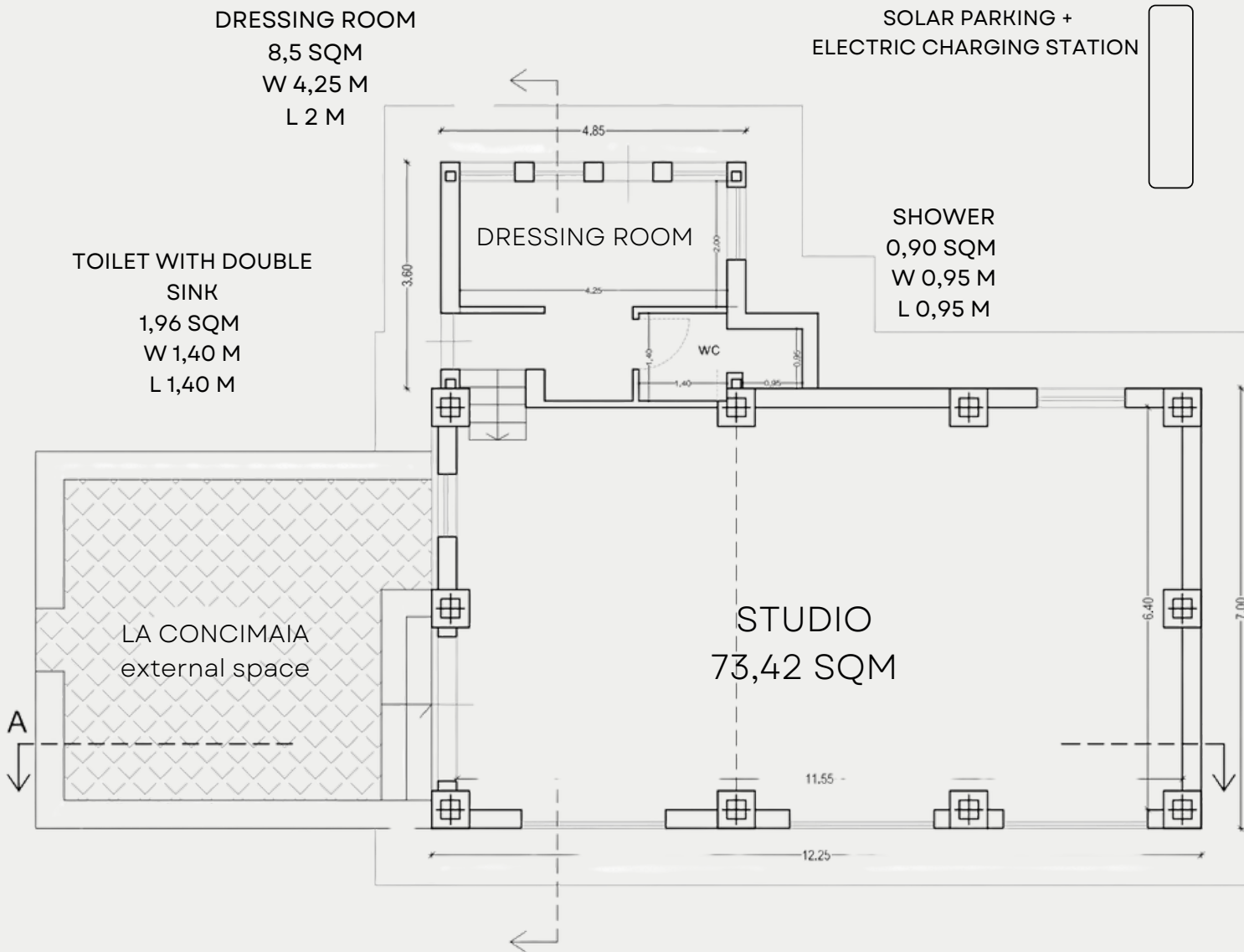
OVEST
FRONTAL PERSPECTIVE WITH THE MAIN
ENTRANCE TO THE STUDIO



SOUTH
SIDE PERSPECTIVE



The Studio is 12 x 6,5 meters with a ceiling height of 2.4 – 6 meters and it is equipped with **wooden floor** and a professional **dance floor**, removable upon request. La Cap is wheelchair accessible and outdoors it is equipped with **solar parking** and electric **charging station**.



DETAILS

STUDIO:
73,42 SQM
W 11,55 M
L 6,40 M

MULTIPURPOSE FLOATING
BIRCH WOODEN FLOOR

VINYL PERFORMANCE
FLOOR
BLACK/WHITE REVERSIBLE

HEATING / AIR
CONDITIONING

AUDIO TECHNOLOGY:
Dolby Atmos dtsx HDMI

LIGHTING: 4 LED WITH
WHITE LIGHT

WI-FI

SOLAR PARKING +
ELECTRIC CHARGING
STATION



FURNITURE

15 YOGA MATS

15 PILLOWS

Photographic LED Spotlight
for Video Shooting and Photo
Studio:

NEEWER 660 LED Dimmable
Bi-Color Video Lights 3200-
5600K CRI 96+ & 190cm Tripod

30 CHAIRS

PROJECTOR UPON REQUEST

FITNESS CYCLETTE



DRESSING ROOM



ANTEROOM



SHOWER

La Cap is equipped with a dressing room, anteroom with **double sink** and toilet with **shower**. If necessary, the dressing room can accommodate **two single beds**, becoming an independent mini apartment with private toilet and direct access to the Studio.

